

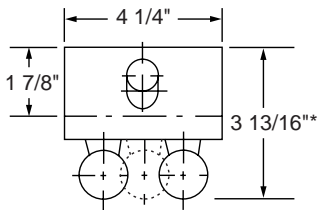
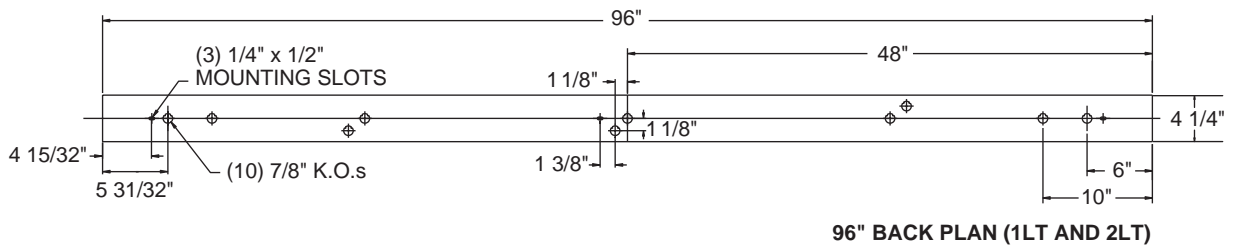
Slimline/High Output Striplite 4', 6', 8', 8' Tandem

PHOTOMETRIC DATA, 2-96" T12 CHX Model

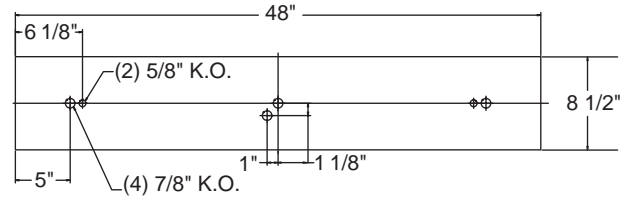
CANDLEPOWER				LIGHT GUIDE (T12 LAMPS AND MAGNETIC BALLAST)				COEFFICIENT OF UTILIZATION												
Angle	0	45	90	Footcandles	Area/fixture in sq.ft./lg. room, good conditions - 8' to 10' ceilings		RC	80		70		50		RW	70		50		RCR	
					CHX 2-96" T12	CHX 2-96" HO			80	70	30	70	50		30	50	30	50		30
5	2212	2242	2254																	
15	2132	2224	2294	35	201	297	1	93	87	83	88	84	79	77	73					
25	1972	2184	2334	50	140	207	2	83	75	68	79	71	65	65	60					
35	1744	2092	2328	75	94	139	3	75	65	46	71	62	54	57	50					
45	1446	1954	2252	100	70	70	4	68	57	48	65	54	46	50	43					
55	1100	1748	2094	AVERAGE LUMINANCE CD/SQ.M				LIGHT DISTRIBUTION				5	63	50	41	59	48	40	44	37
65	714	1484	1812	Angle	0	45	90	Zone	Lumens	%Lamp	%Fixture	6	57	45	36	55	43	35	40	33
75	334	1134	1476	45	7740	8407	9021	0-30	1848	14.7	16.1	7	53	40	32	50	39	31	36	29
85	56	698	1008	55	7212	8511	9294	0-40	3144	25.0	27.5	8	49	36	28	47	35	28	32	26
90	6	572	886	65	6284	8624	9334	0-60	6124	48.6	53.5	9	46	33	26	44	32	25	30	23
				75	4688	8491	9397	0-90	9310	73.9	81.3	10	43	31	23	41	29	23	27	21
				85	2096	7672	8748	0-180	11452	90.9	100.0									

Lamps = (2) F96T12 @ 6300 lumens ea. Input Watts = 157 LER = 65.7 Test #00722 Ballast = Magnetic Ballast Factor = .9 S/MH: 1.2
Comparative yearly lighting energy cost per 1000 lumens = \$3.65 based on 3000 hrs. and \$.08 per KWH

DRAWINGS AND DIMENSIONS



HO and VHO are 4 5/8" deep overall, housing alone is 2 3/4" deep, width is 4 1/4"



CHX/Slimline

48" BACK PLAN (3LT AND 4LT)

